

PLEASE
TAKE
FREE
INSPO!

Winter Yarn ACCESSORIES



FREE KNIT PATTERNS FOR A COZY
Ear Warmer, Hat and Mittens!



HOBBY LOBBY®

Hand in Hand

Much like autumn leaves, the beauty of these fingerless mittens is in their changing colors.



SKILL LEVEL: Intermediate

ABBREVIATIONS:

BO	bind off	k2tog	knit two stitches together
CO	cast on	p	purl
ea	each	p2tog	purl two stitches together
hk	hook	rep	repeat
inc	increase	st(s)	stitch(es)
k	knit		

FINISHED MEASUREMENTS:

Approx. 9" x 4 1/2" (folded, laying flat)

MATERIALS:

- Yarn Bee® Soft & Sleek Chunky™, 5 oz (142 g) skeins of 211 yds (193 m):
 - Crisp Air (A) – 1 skein
 - Spice (B) – 1 skein
 - Ivory (C) – 1 skein
- US size 9 (5.5 mm) knitting needles
- US size I (5.5 mm) crochet hook
- Yarn needle

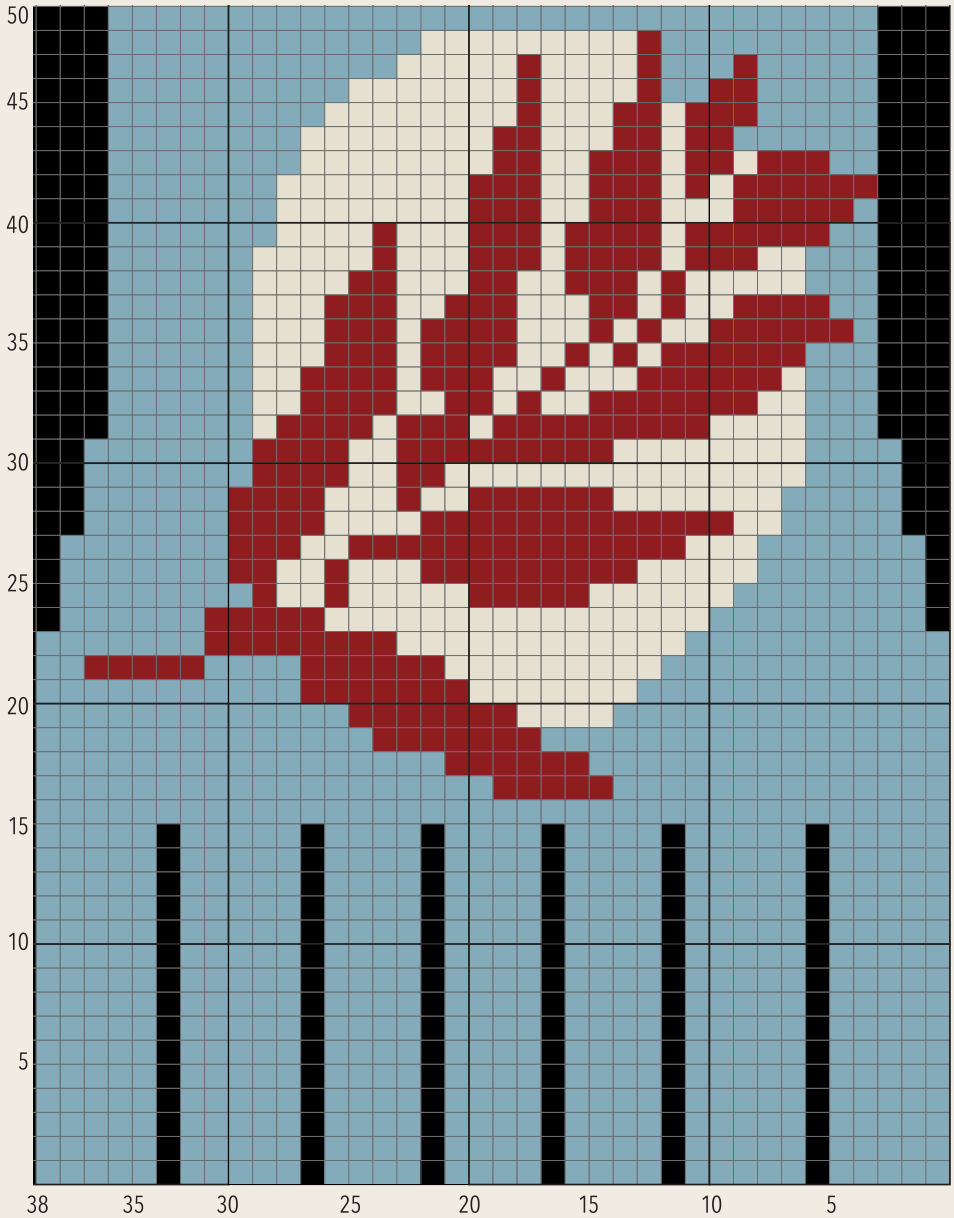
GAUGE: 13 sts and 17 rows = 3"

INSTRUCTIONS: Make 2.**Row 1:** With A, CO 32 sts. Turn at end of ea row.**Row 2:** (k2, p2) rep 8 times.**Row 3:** (k2, p2) rep 8 times.**Rows 4-15:** Rep rows 2-3.**Row 16:** (p5, inc) 2 times, (p4, inc) 3 times, p5, inc, p5 (38).**Row 17:** K14, with B, k5, with A, k19.**Row 18:** P17, with B, p6, with A, p15.**Row 19:** K17, with B, k7, with A, k14.**Row 20:** P13, with B, p7, with C, p4, with A, p14.**Row 21:** K13, with C, k7, with B, k7, with A, k11.**Row 22:** P2, with B, p5, with A, p4, with B, p6, with C, p9, with A, p12.**Row 23:** K11, with C, k12, with B, k8, with A, k7.**Row 24:** P2tog, p5, with B, p5, with C, p16, with A, p8, p2tog.**Row 25:** K8, with C, k6, with B, k5, with C, k5, with B, k1, with C, k2, with B, k1, with A, k8.**Row 26:** P7, with B, p2, with C, p2, with B, p1, with C, p3, with B, p9, with C, p5, with A, p7.**Row 27:** K7, with C, k3, with B, k14, with C, k2, with B, k3, with A, k7.**Row 28:** P2tog, p5, with B, p4, with C, p4, with B, p13, with C, p2, with A, p4, p2tog.**Row 29:** K5, with C, k7, with B, k6, with C, k2, with B, k1, with C, k3, with B, k4, with A, k6.**Row 30:** P7, with B, p4, with C, p2, with B, p2, with C, p15, with A, p4.**Row 31:** K4, with C, k9, with B, k8, with C, k2, with B, k4, with A, k7.**Row 32:** P2tog, p5, with C, p1, with B, p4, with C, p1, with B, p3, with C, p1, with B, p8, with C, p5, with A, p2, p2tog.**Row 33:** K3, with C, k2, with B, k8, with C, k1, with B, k1, with C, k1, with B, k2, with C, k3, with B, k3, with C, k2, with A, k6.**Row 34:** P6, with C, p2, with B, p4, with C, p1, with B, p3, with C, p2, with B, p1, with C, p3, with B, p6, with C, p1, with A, p3.**Row 35:** K3, with B, k6, with C, k1, with B, k1, with C, k1, with B, k1, with C, k2, with B, k4, with C, k1, with B, k3, with C, k3, with A, k6.**Row 36:** P6, with C, p3, with B, p3, with C, p1, with B, p4, with C, p3, with B, p1, with C, p1, with B, p1, with C, p2, with B, p6, with A, p1.**Row 37:** K2, with B, k4, with C, k2, with B, k1, with C, k1, with B, k2, with C, k3, with B, k3, with C, k2, with B, k3, with C, k3, with A, k6.**Row 38:** P6, with C, p4, with B, p2, with C, p3, with B, p2, with C, p2, with B, p3, with C, p1, with B, p1, with C, p5, with A, p3.**Row 39:** K3, with C, k2, with B, k3, with C, k1, with B, k4, with C, k1, with B, k3, with C, k3, with B, k1, with C, k5, with A, k6.**Row 40:** P7, with C, p4, with B, p1, with C, p3, with B, p3, with C, p1, with B, p4, with C, p1, with B, p6, with A, p2.**Row 41:** K1, with B, k5, with C, k3, with B, k3, with C, k2, with B, k3, with C, k8, with A, k7.**Row 42:** P7, with C, p8, with B, p3, with C, p2, with B, p3, with C, p1, with B, p1, with C, p1, with B, p6.**Row 43:** With A, K2, with B, k3, with C, k1, with B, k2, with C, k1, with B, k3, with C, k2, with B, k2, with C, k8, with A, k8.**Row 44:** P8, with C, p8, with B, p2, with C, p3, with B, p2, with C, p1, with B, p2, with A, p6.**Row 45:** K5, with B, k3, with C, k1, with B, k2, with C, k3, with B, k1, with C, k8, with A, k9.**Row 46:** P10, with C, p7, with B, p1, with C, p4, with B, p1, with A, p2, with B, p2, with A, p5.**Row 47:** K5, with B, k1, with A, k3, with B, k1, with C, k4, with B, k1, with C, k5, with A, k12.**Row 48:** P13, with C, p9, with B, p1, with A, p9.**Row 49:** K32, BO.**Thumb (make 2):****Row 1:** With A, CO 3 sts. Turn at end of ea row.**Row 2:** P3.**Row 3:** K1, inc, k1, inc, k1.**Row 4:** P5.**Row 5:** K1, inc, k3, inc, k1.**Row 6:** P7.**Row 7:** K1, inc, k5, inc, k1.**Row 8:** P9.**Row 9:** K1, inc, k7, inc, k1.**Row 10:** P11.**Row 11:** K1, inc, k9, inc, k1.**Row 12:** P13.**Row 13:** K1, inc, k11, inc, k1.**Row 14:** P15.**Row 15:** K15.**Rows 16-19:** Rep rows 14-15. BO.**FINISHING:**

- Mark 4" from bottom and 3" from top on both sides of mitten piece. Sew thumb rows 1-14 to one side of mitten piece.
- Sew both sides of mitten piece (including opposite side of thumb piece) rows 1-14 between marks.
- Make row of sc on top edge.

Mitten Diagram:

Check out this handy grid for a visual reference of the design.



Ear Warmer

This beginner-friendly ear warmer pattern comes together with just 10 rounds of single crochet and some dainty floral embellishments.



SKILL LEVEL: Beginner

ABBREVIATIONS:

ch	chain	sc	single crochet
ea	each	st(s)	stitch(es)
hk	hook	rnd(s)	round(s)

FINISHED MEASUREMENTS:

Approx. 10" x 4" (20" around)

MATERIALS:

- Yarn Bee® Soft & Sleek Chunky™, 5 oz (142 g) skeins of 211 yds (193 m):
 - Black (A) – 1 skein
- I Love this Cotton™, 3.5 oz (100 g) skeins of 180 yds (165 m):
 - Rosey (B) – 1 skein
 - Gold (C) – 1 skein
 - Aqua (D) – 1 skein
 - Ivory (E) – 1 skein
 - Sage (F) – 1 skein

MATERIALS CONTINUED:

- US size J/10 (6 mm) crochet hook
- Yarn needle

GAUGE: 12 sts and 10 rows = 4" square of sc

INSTRUCTIONS:

With A, ch 71.

Rnd 1: Sc in second ch from hk and ea ch across, turn.

Rnds 2-10: Ch 1, sc in ea st across, turn.

FINISHING:

- Fold ends in the shape of a C, facing each other, placing one end inside the other, sandwiching all layers. Using yarn needle, sew ends together, going through all 4 layers. Turn right side out.
- Use yarn needle and remaining yarns to embroider embellishments onto ear warmer.

Bear Wear

Featuring standout details like single crochet edging, chain-stitched strings and fluffy pompoms, this adorable beanie is sure to be your go-to cold-weather accessory.



SKILL LEVEL: Intermediate

ABBREVIATIONS:

BO	bind off	rep	repeat
CO	cast on	st(s)	stitch(es)
ea	each	k2tog	knit two stitches together
inc	increase	p2tog	purl two stitches together
k	knit		
p	purl		

FINISHED MEASUREMENTS:

Approx. 11" x 16" (folded, laying flat)

MATERIALS:

- Yarn Bee® Soft & Sleek Chunky™, 5 oz (142 g) skein of 211 yds (193 m):
 - Linen (A) - 1 skein
- Yarn Bee® Dream Supreme™, 8 oz (227 g) skein of 144 yds (132 m):
 - Weathered Cedar (B) - 1 skein
- US size 9 (5.5 mm) knitting needles
- US size I (5.5 mm) crochet hook
- Yarn needle
- Pompom maker

GAUGE: 15 sts and 21 rows = 4"

BEAR WEAR INSTRUCTIONS:

Row 1: With A, CO 50 sts. Turn at end of ea row.

Row 2: P50.

Row 3: (k10, inc) rep 5 times, k1.

Row 4: P55.

Row 5: (k11, inc) rep 5 times, k1.

Row 6: P60.

Row 7: (k12, inc) rep 5 times, k1.

Row 8: P65.

Row 9: (k13, inc) rep 5 times, k1.

Row 10: P70.

Row 11: (k14, inc) rep 5 times, k1.

Row 12: P75.

Row 13: (k15, inc) rep 5 times, k1.

Row 14: P80.

Row 15: (k16, inc) rep 5 times, k1.

Row 16: P85.

Row 17: K85.

Rows 18-39: Rep rows 16 and 17.

Row 40: P85.

Row 41: K36, BO 13 sts, join A, k36.

From this row, work each side separately.

Left Side:

Row 42 A: P34, p2tog.

Row 43 A: K2tog, k33.

Row 44 A: P32, p2tog.

Row 45 A: K2tog, k31.

Row 46 A: P30, p2tog.

Row 47 A: K2tog, k29.

Row 48 A: P28, p2tog.

Row 49 A: K2tog, k27.

Row 50 A: P28.

Row 51 A: K2tog, k26.

Row 52 A: P27.

Row 53 A: K2tog, k25.

Row 54 A: P26.

Row 55 A: K26.

Row 56 A: P26.

Row 57 A: K2tog, k24.

Row 58 A: BO 10 sts, p15.

Row 59 A: K15.

Row 60 A: P2tog, p13.

Row 61 A: K14.

Row 62 A: P2tog, p10, p2tog.

Row 63 A: K12.

Row 64 A: P2tog, p10.

Row 65 A: K11.

Row 66 A: P2tog, p7, p2tog.

Row 67 A: K9.

Row 68 A: P2tog, p7.

Row 69 A: K8.

Row 70 A: P8.

Row 71 A: K6, k2tog.

Right Side:

Row 42 B: P2tog, p34.

Row 43 B: K33, k2tog.

Row 44 B: P2tog, p32.

Row 45 B: K31, k2tog.

Row 46 B: P2tog, p30.

Row 47 B: K29, k2tog.

Row 48 B: P2tog, p28.

Row 49 B: K27, k2tog.

Row 50 B: P28.

Row 51 B: K26, k2tog.

Row 52 B: P27.

Row 53 B: K25, k2tog.

Row 54 B: P26.

Row 55 B: K26.

Row 56 B: P26.

Row 57 B: K24, k2tog.

Row 58 B: P25.

Row 59 B: BO 10 sts, k15.

Row 60 B: P13, p2tog.

Row 61 B: K14.

Row 62 B: P2tog, p10, p2tog.

Row 63 B: K12.

Row 64 B: P10, p2tog.

Row 65 B: K11.

Row 66 B: P2tog, p7, p2tog.

Row 67 B: K9.

Row 68 B: P7, p2tog.

Row 69 B: K8.

Row 70 B: P8.

Row 71 B: K2tog, k6, BO.

FINISHING:

- Sew back end together, gather around top edge, and pull string to close. Make 1 row of sc around piece.
- **Strings:** With A, chain 25 sts and sew to hat. Make 3" pompoms with B and attach to strings.
- **Ears:** Make pompoms, wrap color A (50 rounds) and color B (50 rounds) with pompom maker. Trim color B ½ inch bigger than color A.